



PREMIER SERIES  
2007/2008



BODY SHAPES: DREADNOUGHT, GRAND AUDITORIUM

*Stanford*

PREMIER SERIES

It happened for us almost half a century ago in front of a grainy black and white screen. The girls were screaming, the parents were complaining and we were transfixed by whatever it was that was making this incredible music. Around here we call it the rapture, the moment that this mystical instrument reached out to us, drawing us in from the wilderness and sparking the passion that has ruled just about every day of our lives since.

Wherever you are in your love affair with the guitar you will find a Stanford instrument that will fill your needs at a price that will leave you shaking your head and wondering how we do it. It's easy, all it takes is years of experience, a true understanding of both the guitar and the guitarist and an unswerving commitment to the true fundamentals of guitar making.

Welcome to our passion. Welcome to Stanford Guitars.

PREMIER  
400



**BODYSHAPE**  
Dreadnought, Grand Auditorium

**TOP**  
Solid Sitka spruce

**BACK & SIDES**  
Khaya Mahogany solid

**NECK**  
Mahogany

**FINGERBOARD & BRIDGE**  
Ebony

**FINGERBOARD INLAYS**  
Micro Dots

**ROSETTE**  
Abalone

**BINDINGS**  
Wood

**MACHINE HEADS**  
Nickel plated with black Ebonit buttons

**NUT & SADDLE**  
Bone

**PURFLINGS**  
Herringbone top border

**FINISH**  
High gloss

**NECK FINISH**  
Satin finish

**NECK WIDTH AT NUT**  
45 mm

PREMIER SERIES

PREMIER  
440



**BODYSHAPE**  
Dreadnought, Grand Auditorium

**TOP**  
Solid Sitka spruce

**BACK & SIDES**  
Ovangkol solid

**NECK**  
Mahogany

**FINGERBOARD & BRIDGE**  
Ebony

**FINGERBOARD INLAYS**  
Micro Dots 2 mm

**ROSETTE**  
Burlwood

**BINDINGS**  
Padouk

**MACHINE HEADS**  
Nickel plated with black Ebonit buttons

**NUT & SADDLE**  
Bone

**PURFLINGS**  
Black/white

**FINISH**  
High gloss finish

**NECK FINISH**  
Satin finish

**NECK WIDTH AT NUT**  
45 mm



PREMIER  
500



PREMIER SERIES

PREMIER  
600



**BODYSHAPE**  
Dreadnought, Grand Auditorium

**TOP**

Solid Sitka spruce

**BACK & SIDES**

Ovangkol solid

**NECK**

Mahogany

**FINGERBOARD & BRIDGE**

Ebony

**FINGERBOARD INLAYS**

Micro Dots 2 mm

**ROSETTE**

Burlwood

**BINDINGS**

Padouk

**MACHINE HEADS**

Nickel plated with black Ebonit buttons

**NUT & SADDLE**

Bone

**PURFLINGS**

Black/white

**FINISH**

High gloss finish

**NECK FINISH**

Satin finish

**NECK WIDTH AT NUT**

45 mm

- TOP**  
Solid Sitka spruce
- BACK & SIDES**  
Solid Indian Rosewood
- NECK**  
Mahogany
- FINGERBOARD & BRIDGE**  
Ebony
- FINGERBOARD INLAYS**  
Micro Dots 2 mm
- ROSETTE**  
Abalone
- BINDINGS**  
Maple Bindings
- MACHINE HEADS**  
Nickel plated with black Ebonit buttons
- NUT & SADDLE**  
Bone
- PURFLINGS**  
Herringbone top border
- FINISH**  
High gloss
- NECK FINISH**  
Satin finish
- NECK WIDTH AT NUT**  
45 mm



PREMIER  
700

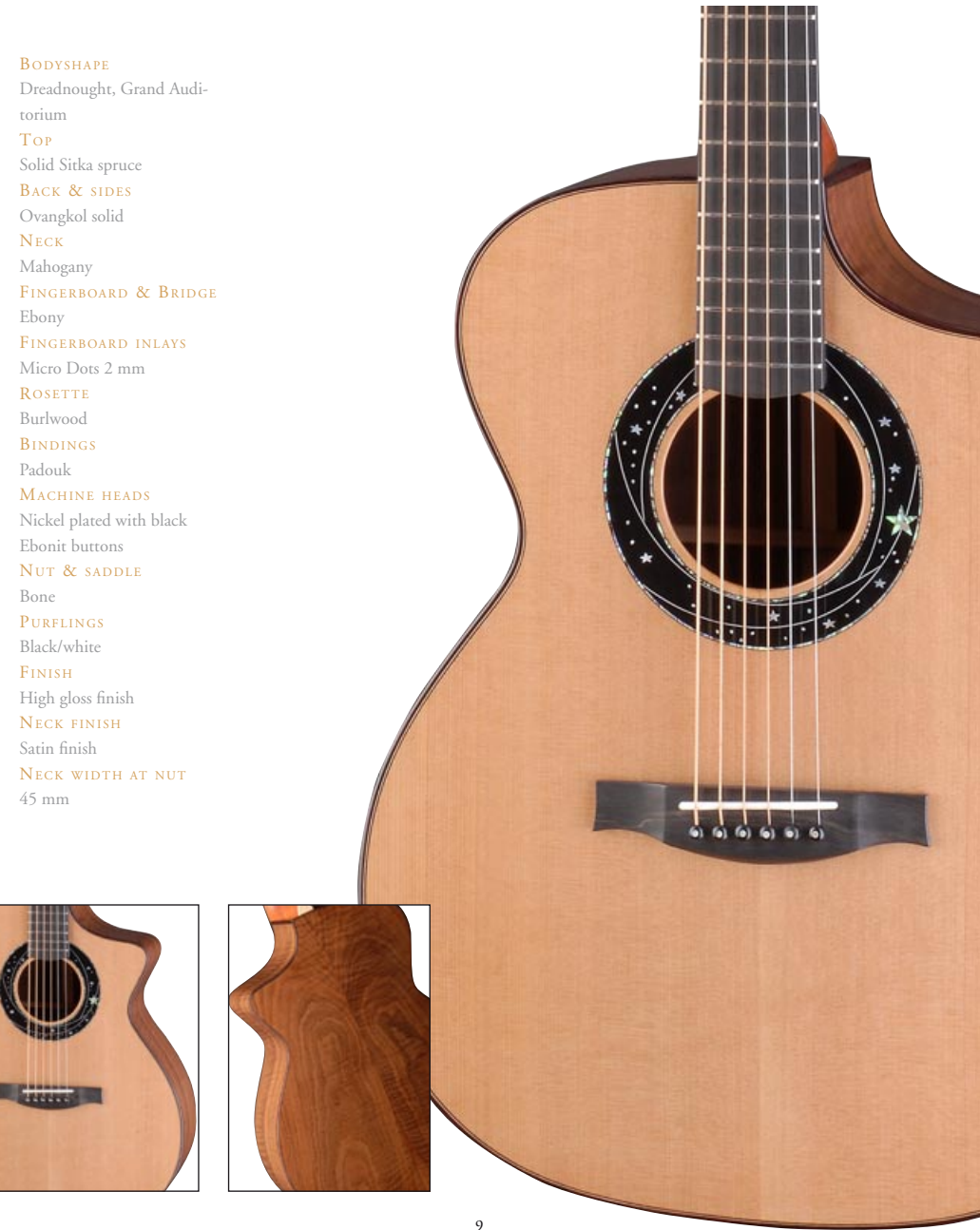
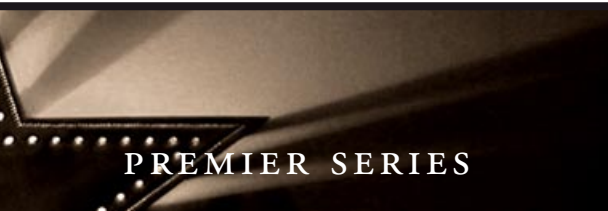


PREMIER SERIES

PREMIER  
STARWALKER



- TOP  
Solid Sitka spruce
- BACK & SIDES  
Angkor Wat aolid
- NECK  
Mahogany
- FINGERBOARD & BRIDGE  
Ebony
- FINGERBOARD INLAYS  
Micro Dots 2 mm
- ROSETTE  
Abalone/Burlwood/Abalone
- BINDINGS  
Angkor Wat
- MACHINE HEADS  
Gold plated with Black Ebonit buttons
- NUT & SADDLE  
Bone
- PURFLINGS  
Wood
- FINISH  
High gloss
- NECK FINISH  
Satin finish
- NECK WIDTH AT NUT  
45 mm



- BODYSHAPE  
Dreadnought, Grand Auditorium
- TOP  
Solid Sitka spruce
- BACK & SIDES  
Ovangkol solid
- NECK  
Mahogany
- FINGERBOARD & BRIDGE  
Ebony
- FINGERBOARD INLAYS  
Micro Dots 2 mm
- ROSETTE  
Burlwood
- BINDINGS  
Padouk
- MACHINE HEADS  
Nickel plated with black Ebonit buttons
- NUT & SADDLE  
Bone
- PURFLINGS  
Black/white
- FINISH  
High gloss finish
- NECK FINISH  
Satin finish
- NECK WIDTH AT NUT  
45 mm



PREMIER  
STARWALKER  
»GALAXY«

PREMIER SERIES



SPECIFICATIONS

TOP

Solid Sitka spruce

BACK & SIDES

Solid Maple

NECK

Solid Maple

FINGERBOARD & BRIDGE

Ebony

FINGERBOARD INLAYS

Micro Dots 2 mm

ROSETTE

„Starwalker Galaxy“ Abalone, MOP and ebony

BINDINGS

Padouk

MACHINE HEADS

Black with black Ebonit buttons

NUT & SADDLE

Bone

PURLINGS

Black/white

FINISH

Black High gloss

NECK FINISH

Ebony powder coated semi gloss satin black

NECK WIDTH AT NUT

45 mm



Left: Abalone, MOP, and ebony are used for the rosette.  
Right: The Starwalker »Galaxy« has a black high-gloss finish with padouk binding.





STANFORD CUSTOM GUITARS  
TONI GÖTZ  
AM REHBERG 15  
D-97268 KIRCHHEIM  
GERMANY

+49 (0) 93 66 9 99 78  
INFO@I-MUSICNETWORK.DE  
WWW.STANFORDGUITARS.DE